



# *The* **Rhodoholic**



Cowichan Valley Rhododendron Society

Volume 26:5 June 2015

## **President's Message**

We are coming to the close of a very energetic spring. We have had an opportunity to attend, host and participate in joint meetings, a garden fair, plant sales, a convention and travels abroad. And now, my final president's message is filled with smiles and gratitude.

Congratulations to Ian Efford on the launch of his book "The Public Rhododendrons Gardens of Vancouver Island". Congratulations to Bill Dumont and his well-behaved travelers on a very successful UK bus tour. All CVRS members deserve to give your selves a

**June 20, 2015**

### **CVRS Summer Picnic**

Ian & Shirley Efford's Garden at  
2307 Lochsyde Drive.

See page 3 for more details

---

### ***In This Issue:***

Mill Bay Garden Club  
Community Flower & Garden  
Show 4

Cowichan Valley Garden Fair  
2015—A Success 4

Species Garden Working  
Party 8

Chelsea Garden Show Was a  
Big Hit! 9

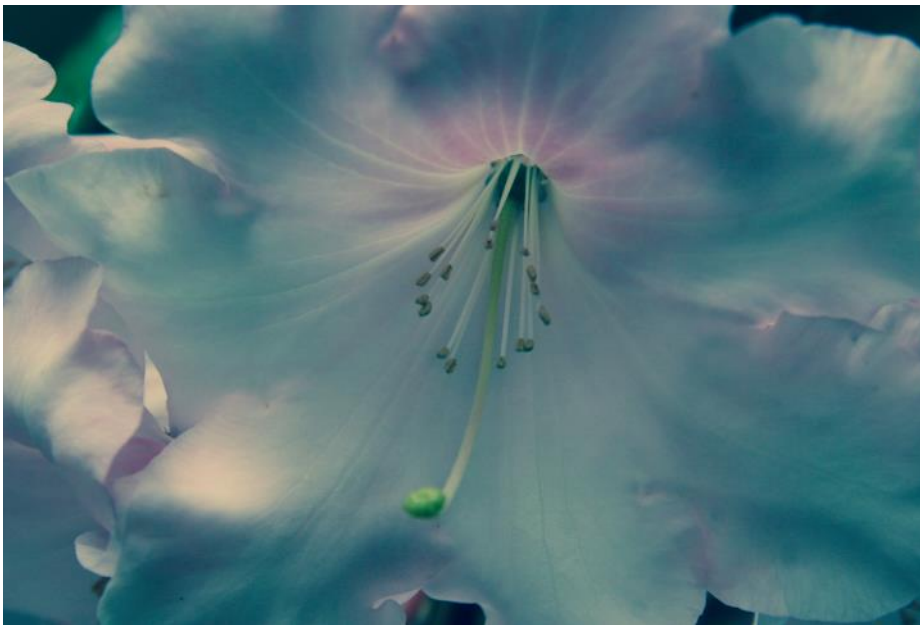
Pl@ntNet 15

Shade Trees for the Rhodo  
Garden: Halesia 17

Open Gardens 20

ARS Sydney Convention 21

---



**Photo by Mhairi Bruce, winner of the peoples choice photography award at the American Rhododendron Convention in Sydney**

huge pat on the back for supporting and participating in such an active group.

I would like to extend a thank you to the executive for providing me with support and assistance over the past two years. Thank you to the membership for your support and willingness to volunteer and lend a hand when required.

A fitting close to the season and start of summer is our June 20th picnic hosted by Ian and Shirley Eford. It will begin at 11:30 am. Food and drinks will be provided at the picnic. Please RSVP to Bill Dumont (wedumont@shaw.ca) **by Monday June 12** to ensure we know the number of persons attending.

At the picnic our 2015/16 executive members will be elected or introduced by acclamation. A call for nominations to fill our vacant executive positions went out in March. To date Carrie Nelson has let her name stand for President and Sharon Tillie has put her name forward as Vice President.

Pass one of our newsletters on to a friend this summer and invite them to the September meeting to hear Gord McKay give a presentation on "The Two George's: The Plant Introductions of Forrest and Sherriff".



I look forward to seeing all of you at the September 9 meeting (second Wednesday). It will take place following the Labour Day weekend.

I wish all of you an opportunity to put your feet up for a minute this summer. Try one of those lovely, seldom used, seating areas we all place in our gardens.

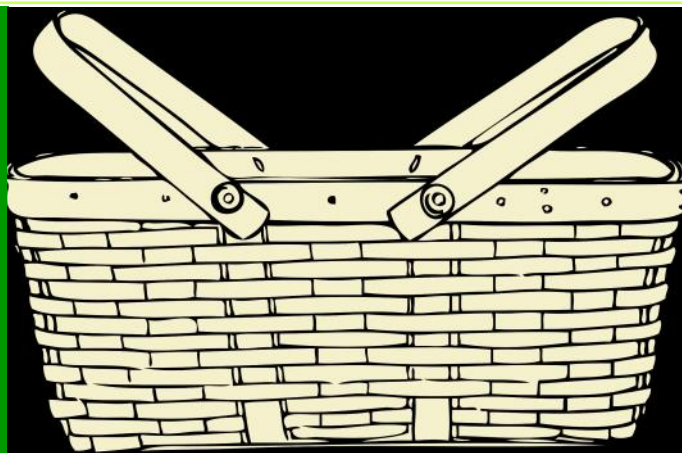
Sandra Stevenson

***We have included images from various gardens and sites visited on the UK tour throughout the newsletter. There will be a full program on the tour in the fall.***



**CVRS UK Tour—Overworked Gardener at RHS Wisley Garden Art Show**

# CVRS Summer Picnic on June 20 - Don't miss it!!



The CVRS Summer Picnic will be held at Ian and Shirley Efford's garden at 2307 Lochsyde Drive, Duncan (off of Lakes Road) on Saturday June 20 from 11:30 am to 2:30 pm. As a big thank you to all the CVRS members for their help with all of the clubs activities such as open gardens, special events, the Garden Fair, participation in the UK and Juan de Fuca trips and the ARS convention the lunch is being catered and welcomes all our members and guests from other ARS clubs.

A delicious menu is planned as follows:

*SPINACH BLUEBERRY CRANBERRY ALMOND and GOATS CHEESE SALAD with WILDBERRY VINAGRETTE*

*CAESER SALAD with FRESH CROUTONS ASIAGO PARMASEAN and ANCHOVIE DRESSING*

*CRAMMED SEAFOOD CHOWDER with WILD SALMON SHRIMP and CLAMS*

*COLD CUCUMBER CRUSTLESS SANDWICHES with FRESH HERB CREAM CHEESE and MAYO*

*BLACK FOREST HAM AGED CHEDDAR GREEN LEAF LETTUCE and HONEY MUSTARD MAYO on a CROISSANT*

*STRAWBERRY SHORTCAKE with VANILLA BEAN ICE CREAM and STRAWBERRY COOLI*

Coffee, tea, soft drinks and wine will also be served at this annual event. Please RSVP to Bill Dumont [wedumont@hotmail.com](mailto:wedumont@hotmail.com) **250 743 9882 no later than Monday June 12** to confirm the food order and advise of any food issues with the menu.

## Annual General Meeting Notice

Notice is given for the 2015 CVRS Annual General Meeting to be held on Saturday June 20 at the Summer Picnic. At the meeting the nominating committee will report on the candidates for the CVRS Executive positions, Directors at large and call the any additional candidates for the vacant positions. If required, election of new executives and directors will be held at the June 20 meeting.



# Cowichan Valley Garden Fair 2015 A Success

*Thanks to Sharon Tillie and Verna Buhler for their photos in this article!*

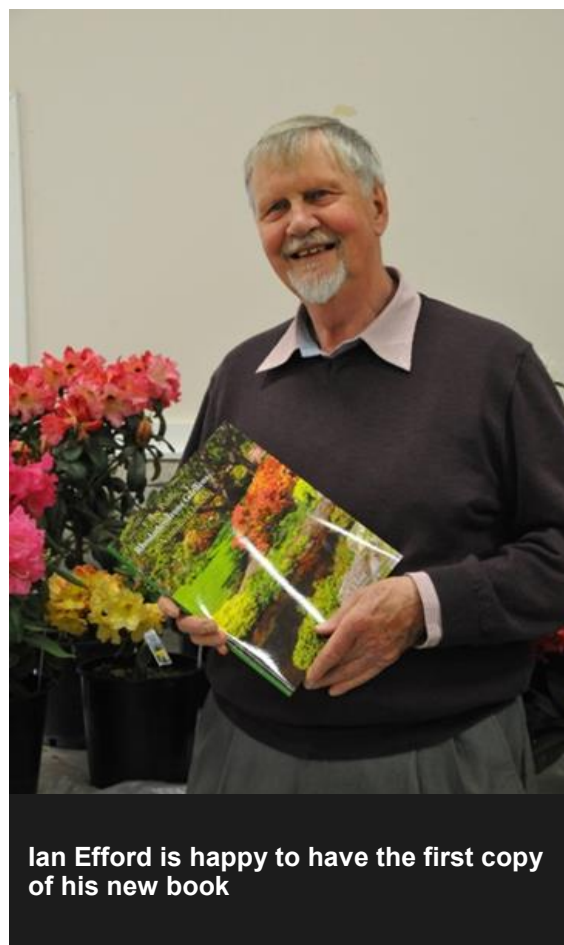
The 2015 Cowichan Valley Garden Fair was held on Saturday May 2 at the Cowichan Exhibition. This was the fifth garden fair held at the Cowex and was a well-attended success with a record number of plant sold and lots of promotion of rhododendrons. Because of reduced availability of rhodos generally and commitments to the ARS plant sale the following week there were only 9 growers/plant sellers this year but total plant sales were the highest on record at 1284 plants worth \$15592.



Garden Fair Entrance



Kathy Coster delivers her prize Hostas to the Member's Table



Ian Efford is happy to have the first copy of his new book



**Brenda, Ali and Reba organised the CVRS Plant Table**

Because of the rhodo shortage CVRS bought rhodos from several sources including Whitney's in Washington, Costco, Home Depot and others and sold almost 300 plants this year including the members table donated plants. All members worked hard on this year's sale with the setup, staffing and cleanup after.

By opening time at 10 am on Saturday there was a lineup of more than 200 customers and the 25 new CVRS garden fair carts and 10 borrowed shopping carts from Thrifty's flew down the aisles and stripped most plants bare

from the various vendors. Once again Perennial Ridge and member Rose Rogan was a top seller and Joe Hudak's Barepoint nursery brought in several hundred large rhodos and azaleas that also sold quickly.

The CVRS made significant plant donations this year to the BC Forest Discovery Centre, the Crofton Museum and the Snipe Fountain in Chemainus. Presentations were made at the Garden Fair.



**Elaine Kitchen Arranges Rhodos for the Coffee Table**



*President Sandra presents rhodos to Chris Gale of BC Forestry Museum and representative from the Municipality of North Cowichan*





**Eaager Rhodo buyers lined up early**

Rhodo flowering and the truss show were very impressive with several hundred trusses on display. The People's Choice award went to the Sharon Tillie for her Horizon Monarch truss. Thank you to all of the members who so generously brought trusses from their gardens to be displayed. The beautiful trusses were placed in plastic bottles and labelled for the public to see. The black tablecloths showed off the flowers to perfection. What a show it was! Both hybrid and species trusses were shown in a kaleidoscope of colours. As people came through the door they would ask what is that "yellow" one called and we could tell them a bit about it then they were off to find it in the sales area. There were many positive comments from customers



**Sharon Tillie with her People's Choice Award 'Horizon Monarch' ('Nancy Evans x Point defiance) Brockenbrough 1989 and purchased from the Slaby's about ten years ago**

and others about the trusses and the Garden Fair in general. Thanks again to the Murray's for managing this year's show and to the members for bringing their trusses in.

Vendors and others donated items for our draw and we raised almost \$500 for the club. A big thanks to Marie and Jeremy for looking after the ticket sales and managing this important fundraiser for us.

For the first time we used a new credit card processing system called SQUARE and we processed \$6400 of charges for a fee of about \$175. There were no glitches in the credit card processing and the cash checkout worked well again for the \$10,000 in cash and cheques processed.

There was extensive newspaper advertising and promotion on Social Media along with a wide distribution of the garden fair signs and three new banners and free advertising on the Thrifty's foods sign at Beverley Corners.

Simply Fish samples, free rhodos and lilies were distributed to the first hundred customers and free coffee, soft drinks and donuts were provided to all customers. A special thanks to Jemico Enterprises, 3375 Smiley Road in Chemainus, (250) 246-2352 an excellent, reasonably priced supplier of garden soil for their Gold Sponsorship of our Garden Fair.

Due to some calendar quirks next year's sale will be held at the Cowichan Exhibition on Saturday April 30, 2016 from 10 am to 2 pm. The facility has been booked and deposits paid.

At a follow up meeting several suggestions were accepted for next year's sale:

- A much reduced newspaper advertising budget



**Verna and Marie working hard in the "backroom" on counting tags**

- A new banner for the overhead walking bridge near Koksilah school south of Duncan
- A credit card only checkout exit in the back right corner of the Mellor Hall for the first two hours of the fair
- Securing a mainland grower to provide rhodos to CVRS at wholesale prices
- Purchase 15 to 20 more 4 wheeled carts if and when they come on sale again.

Another thanks to everyone and to Elaine and her dad for storing the Fair supplies and plant sale carts.



**Jeremy and Marie Evans managed the raffle**



**Mary Gale, long serving Cashier**



**Bernie Dinter Unloads Plants for his Display at the Garden Fair**



## Species Garden Working Party

After years of discussions to get work on the garden underway, work is about to begin at the Milner Garden site in Qualicum. The first step is to cut down the smaller trees (less than 6" diameter) on the site. The trees cut down will be cut into manageable sizes.

Volunteers are needed help move the resulting logs and branches to the road at the edge of the garden where they will be chipped.

The date set for the volunteer action is June 18, 2015 from about 8:30 am to noon.

Please note that the site is very rough. It is recommended that volunteers wear boots and heavy gloves and clothes appropriate for working in a wild forest environment.

If enough volunteers come forward, another project is to remove the old fence from around the proposed holding area. This area will be cleared and a new fence will be built. The area is to hold plants acquired which are not yet ready for planting.

If you are interested and can help out, or have any questions, please email Marilyn Dawson at [dawsom@shaw.ca](mailto:dawsom@shaw.ca).

Tony Ansdell



## New Rhodo Garden Book For All Members

In light of a successful financial year the CVRS will be presenting each member with a copy of Ian Efford's new book – The Public Rhododendron Gardens of Vancouver Island- at the June 20 picnic. For those members who have already purchased a copy of the book a \$20 credit will be provided towards the 2015 ARS Dues. Those who are unable to attend the picnic can pick up their copy directly from Ian or at the September 9 CVRS meeting which will be held at the United Church Hall in downtown Duncan. Due to high costs we cannot mail any copies.



# CVRS UK Trip Visited Many Memorable Gardens and Sites in SW England

## Chelsea Garden Show was a Big Hit!

The May 14 to 24, 2015 tour of gardens and sites in the SW region of England was a big success. Forty seven members of the Club and many others from Vancouver Island, Saltspring Island in particular and the mainland joined the tour including ARS members from Fraser South, Victoria, MARS, Nanaimo and North Island chapters. Tour members are working up reports with photos of each of the gardens and sites visited and a presentation will be made at the October meeting of the CVRS on the tour.



CVRS UK Tour Group at Blenheim Palace on May 22

Along with many highlights the Chelsea Garden Show was something else to witness for anyone interested in gardens. The comments herein are from Bill Dumont, UK Tour leader who visited Chelsea on the final day of the show – May 23. Formally known as the *Great Spring Show*, is a garden show held for five days in May by the Royal Horticultural Society (RHS) in the grounds of the Royal Hospital Chelsea in Chelsea, London. Held at Chelsea since 1912, it is the most famous flower show in the United Kingdom, and perhaps in the world, attracting visitors from all continents. Only about 150,000 tickets are sold for the five day event held in London which has a population of more than 12 million people. The media covers all aspects of the show and it takes a month to set up and a month to take down all the displays and what must be one of the largest steel framed tents in the world.



The Queen is a regular visitor to the Chelsea show





**Amazing Sculptures**



**Main entrance display made from driftwood-can be yours for only \$70,000!**



Sean Murray, winner of the Great Chelsea Garden Challenge, produced a smart, eye-catching front garden with a message. All elements seen were part of the show. Nothing remains after.



Incredible mum displays ala ice cream parlour



There are essentially four main aspects of the show:

1. The show gardens - more than 40
2. The fresh gardens in the main tent
3. The artisan gardens—a collection of funky and quirky displays
4. Hundreds of vendors selling everything from garden art to secateurs

Everybody from Prince Harry, to world famous garden designers to the Royal Bank of Canada were behind many of the show gardens which all looked like they had been on site for years. Every imaginable plant design, species, hardscaping and water feature could be found in the gardens.







CVRS UK Tour—Garden Maze at Glendurgan



CVRS UK Tour—Spectacular *Toonia chinensis* at RHS

## 2016 Garden Fair Confirmed—Garden Fair Signs Wanted!

Please bring all the Garden Fair signs you have to the picnic on June 20 at Ian Efford's. They should be grouped in lots of 10 and any needing cleaning or new wires should be identified. They will be stored until next year's Garden Fair which will be held on April 30, 2016 at the Cowichan Exhibition.



CVRS UK Tour—Rose Wall at Oxford Botanic Garden

## New Members to Get Greer's Guidebook

Currently all new CVRS members receive a welcome rhododendron from the club. That will continue and new members (as of August 2015) will also receive a complimentary copy of the Greer's Guidebook to Available Rhododendrons – Third Edition. As confirmed rhodoholics know this is the "bible" of rhodos most widely used in our area. While it does not include many of the recent hybrids or newly found species it is an exceptionally valuable book for the beginner and the expert. The CVRS has purchased 40 copies and these are also available to members at a discounted price of \$20 each. Contact Bill Dumont to arrange a copy for yourself. As Harold Greer is retiring and closing his Garden and nursery in Eugene Oregon many are hoping he will update his Guide with a fourth edition, this favourite rhodo book.





Gatehouse Entrance to Lanhydrock Garden



Border Garden at Lanhydrock



Spectacular Mediterranean Garden from top of St. Michael's



CVRS Tour Guide Tool for Ensuring On Time Departures



Two Hundred Year Old R. Williamsianum at Heligan Gardens



# Pl@ntNet

## One year after launch the project is booming!

Launched in 2013 at the 50th Paris International Agricultural Show, the Pl@ntNet application allows users to collect, annotate and search for images to help them identify plants using their smartphone. Making botany accessible to everyone does not seem like such a far-fetched idea. Pierre Bonnet, coordinator of the project for CIRAD, and Alexis Joly, a researcher at Inria's Zenith team, provide an initial appraisal of the Pl@ntNet venture and reveal upcoming initiatives.

Initiated in 2009, the Pl@ntNet project is backed by Agropolis Foundation "This project is a real scientific and human adventure," both for Alexis Joly and Pierre Bonnet. However, it is an adventure that has a clear objective: to provide a collaborative platform and tools to make it easier to share



information about plants.

## Pl@ntNet: plants and humans

Pl@ntNet is a unique system that allows its users to submit several photographs of a single plant depicting different detailed views of its organs (flower, leaf, fruit, stem). These photos are then automatically compared with the images in a botanical database, enabling the user to find the name of a plant's species from a list of results. The iPhone version of the Pl@ntNet application, launched at the beginning of 2013, has now been downloaded 80,000 times. The Android version, released in January 2014, has already registered 3,600 downloads. "Between 500 and 1,000 people per day use the app during the summer. Pl@ntNet has been enriched by the data collected by its users and, thanks to a snowball effect, has become much more widely used. "At launch the application had a repository of French flora totaling 800 species. Pl@ntNet



now contains nearly 4,000 species and 86,000 images," says Alexis Joly.

The PI@ntNet application would not have worked so well without the technological progress of the last two years in mobile telephony. This includes the fact that the latest smartphones take very good quality photos. What's more, the initial challenge was sizeable. "Presenting such rich structured visual data and basing this on the leaves, flowers and stems of the majority of species in French flora was something that didn't exist at all," says Pierre Bonnet.

PI@ntNet includes an automatic plant identification tool based on photos. It also draws on the wealth of the Tela Botanica network to enrich the database used, as well as on the data sent by numerous enthusiast contributors, from students to retired individuals and school pupils. "This is a collaborative knowledge production initiative, like Wikipedia. The idea is that the whole is enriched by the users," explain Pierre and Alexis. In addition to the data collection afforded by this participatory aspect, PI@ntNet is of both educational and ecological interest. "With a smartphone application, everyone can conduct tests and contribute. This makes PI@ntNet a good way to raise the public's awareness of the flora around them.

The project team has also moved onto social networks and is involved with schools, media libraries and is working on collaborations with botanical gardens. "We're currently helping schools with digital herbarium projects at a classroom level. The teacher and their class are therefore actually contributing to a research project whose finished product they can use. Through this exchange, we'd like to collect numerous botanical data that we can work on," explains Pierre Bonnet.



Every imaginable allium extravaganza

### From germination to growth, PI@ntNet is continuing to develop

In one year of existence, the application has been significantly enhanced. For example, it now includes much more information about flowering dates. What's more, although PI@ntNet is proving popular in France, it could well replicate this internationally given that 74% of users are from other countries. The next challenge involves tropical flora, a sizeable challenge in every respect because the floral designs, larger in size, are far more numerous and diverse. What's more, 3G coverage in tropical regions is perhaps not as stable in some areas as in Europe.

It's worth remembering that PI@ntNet is the result of a scientific project that aims to produce new methods and data sets, based on plants that are applicable in ecological work. Numerous other challenges lie ahead and are not insignificant, as Pierre Bonnet explains. "The application currently mobilizes a lot of data. One of the difficulties will be maintaining a level of stability and fluidity in order to enable the application to progress with a growing user base."



# Shade Trees for the Rhodo Garden: *Halesia*

If we grow a range of different rhododendrons, it is almost imperative that we have some shade in the garden. Few rhododendrons can withstand full sun during the hottest and driest time of the summer although very heavy mulching accompanied by drip irrigation certainly helps. On the east side of Vancouver Island the predominant shade is from Douglas firs although a few gardens are shaded by Garry oak. Douglas firs suck moisture from the surrounding ground and rain heavy branches down on our gardens during our frequent winter wind storms. They are also a refuge for root weevil. Garry oaks have the advantage of providing light in the winter and shade in the hottest period of the year. They too rain down branches during storms but these branches are rarely heavy, having rotted on the tree before they drop.

If you do not have Garry oak already, growing them to a reasonable size during your gardening life is unlikely. Landscape gardeners advocate the use of such trees as ornamental conifers but I find most of them too dark. Rhododendrons usually have very heavy, dark green leaves and companion trees that have a lighter leaves and a more open texture providing contrast with and shade for rhododendrons.



*Halesia carolina*

Various large bushes and some trees fit this description. In my garden, I try to have two ornamental shade trees and at least five rhododendron in each bed. The trees must be chosen to fit the size of the bed. In one bed I have a single Davidia since it is large and growing quite rapidly. Another has a Magnolia, which is not doing too well, and a Korean dogwood. Another bed has another Magnolia and a flowering Stewartia. In this latter case, nature is not following my design plan as the Stewartia has decided to be a large bush and has



CVRS UK Tour - The Thai display included more than 100,000 orchids and 3000 bromeliads



CVRS UK Tour—Virtually every flower was in perfect bloom oblivious to the real world outside!

given up any hope of becoming a tree. The Magnolia is not doing much better!

Another bed has a *Styrax*, which brings me to the point of this article. Quite a few gardeners grow *Styrax* spp. which are small, light trees with fine leaves and an abundance of beautiful small open bells [hence the name snowbell] in late spring. Later in the summer they are covered with small hanging balls, which are the seed pods. These trees provide light shade during the summer and do not overwhelm the garden in any way. Other similar and related trees in the same family, *Styracaceae*, are in the genus *Halesia*, or silverbells.

My experience with *Halesia carolina*, the Carolina silverbell, started during a visit to Moe and Johanna Massa's large rhododendron garden in Sooke. They showed me the tree, which was in full flower, and I mentioned that I would like some seeds in the autumn. Later in the year Moe brought me 300 seed pods. These seed pods were very hard, somewhat like *Davidia* seed pods which I have been unable to open. For this reason, I divided the 300 seeds into batches and refrigerated some, froze some, put some in warm water and switched others between periods in the refrigerator and the outdoors. Four germinated! Three eventually died and one began to grow. It now stands 3m tall and is completely covered with white bell flowers each spring. These flowers are less open, more bell-like, than those of *Styrax*. The leaves are a little larger than those of *Styrax* and are light green so that the tree forms an attractive small shade tree even after the flowers are over for the year.

Bernie Dinter showed me a sister species, *Halesia monticola*. The noticeable difference between these two species is that one is covered in innumerable small flowers and the other has fewer large flowers. I recommend both as well as *Styrax* spp. Trees in either genera are not only suitable for a large garden

but one or two would fit quite well in a small city garden. In either case, they would be an attractive plant to rhododendrons and provide light shade.



*Halesia monticola*

Finally, if you are in a hurry you can find both genera at local nurseries on the island or, if you are patient, you can start them from seed or cuttings. If you intend to grow them from seed, I would recommend starting with a large

number! My cuttings of *Halesia* all died perhaps because I had taken cuttings from shoots that had hardened off. Now, I am starting a new batch with young, soft cuttings taken at the end of May. If they take, I hope that they will find their way into members' gardens in a couple of years.

Ian E. Efford



*Halesia monticola*

*Thanks to Ian and Bernie for the photos for this article.*



# Open Gardens Thursday June 25th 4 – 8 PM

CVRS members have been invited to two open gardens next week as guests of the Cowichan Valley Garden Club. The following provides detail and instructions on how to find the gardens.

## Dorothy Johnstone 1254 Kathleen Drive (Off Maple Bay Road), Duncan

I have been on this property for 12 years. We started with a blank palette and planted one area at a time. We have Tzouhalem shale so it has meant pick axing a hole for the plants and replacing the shale with soil.

In 2013 I divested myself of the front lawn and replaced it with gravel walks and beds of deer and drought tolerant plants.

This spring I have removed a series of wooden decks in the back yard and am replacing them with gravel and flagstones. As the lot is fairly steep I am incorporating a pond and stream into this renovation. We have had a learning experience here as the water feature workshop has shown people how they can create their own backyard pond.

One part of the back has been left as a Garry oak meadow with the associated wildflowers. There are a variety of flower beds and patios scattered throughout the rest of the property with a variety of native plants as well.

Directions: From Duncan—Take Trunk Road and Tzouhalem Road to the roundabout. Take the exit to Maple Bay Rd. Continue along Maple Bay Rd. to Mackenzie Drive (Lakeview subdivision) Turn Right onto Mackenzie proceed to Kathleen Drive, the third street up, and turn left. 1254 is on the right hand side of the road approx. 7 houses from Mackenzie. There is room for three cars to park at the top of the driveway and lots of on street parking.

From the north—take Herd Road. Proceed to the end of Herd Rd. Turn right onto Maple Bay Road. Continue to Osprey Drive (fire hall on the corner). Kathleen Drive is the second right turn off of Osprey. 1254 will be on the left hand side of the road about 3/4 of the way between Osprey and Mackenzie.



CVRS UK Tour—Virtually every flower was in perfect bloom oblivious to the real world outside!

## New and Barely Used Garden Books For Sale at Summer Picnic

There will be a fantastic opportunity for garden book lovers at the CVRS picnic this year. A retired member is making available his exceptional collection of brand new and lightly used rhodo and garden books for a very reasonable price to club members. Here's your chance to build up you own library with quality books for great prices. Come early for best selection.

## Jean Addison, 1705 Eagle View Place (Off Maple Bay Road), Duncan

We moved to this area from Salt Spring Island in July 2008.

The garden is situated on rock, this has created challenges. The bones of the garden were established when we purchased the home and over the years we have amended the sandy soil and added a collection of hostas, hellebores, heucheras, clematis, heathers and roses. We inherited a lovely selection of hydrangeas in beautiful shades of blue.

The main features are in the back and in the “secret” side garden.

Directions: Coming from Duncan direction come up Maple Bay Road turn RIGHT on Stonehouse Way and then LEFT on Donnay Drive at the next RIGHT turn up Eagle Ridge Terrace come up towards the water tower and the road will curve to the right, then take the next LEFT onto Eagle View Place. IF you are coming from Maple Bay area turn up Everest Way and proceed to Donnay Drive, turn RIGHT and then Left onto Eagle Ridge Road Lost: Phone: 250-597-1558



CVRS UK Tour—Vegetable Plots of RHS Rosemoor



CVRS UK Tour—You could buy bulbs/seeds of most flowers on display



## ARS Sidney Convention a Huge Success

Almost 400 rhodo enthusiasts attending the excellent Sidney ARS convention this month which featured extensive garden tours and excellent, world class presenters on a wide variety of timely topics. As well, the CVRS assisted in organising an excellent plant sale with many unique and rare plants available during the 4 day convention. The food and camaraderie were first class and many new friendships established and old ones renewed. The convention was also a financial success.



*Guest Speakers:  
Dennis Bottemiller  
Kenneth Cox, Hartwig  
Schepker, Evelyn Weesjes and  
Lionel de Rothschild in  
Evelyn's garden, Towner Crest*







**CVRS Members helped at the plant sale**



**Ian's new book was a hot seller at the convention**



**Plant sales were brisk at the convention**





## 2014-2015 Executive

- President:  
Sandra Stevenson  
([pinchofherbs@shaw.ca](mailto:pinchofherbs@shaw.ca) 250-748-5570)
- Past President: Ian Efford  
([efford@shaw.ca](mailto:efford@shaw.ca)  
250-597-4470)
- Secretary: Verna Buhler  
([Vlbuhler@shaw.ca](mailto:Vlbuhler@shaw.ca)  
250-748-8889)
- Treasurer: Bill Dumont  
([wedumont@hotmail.com](mailto:wedumont@hotmail.com) 250-743-9882)
- Membership: Marie Jacques  
([randamjax@shaw.ca](mailto:randamjax@shaw.ca)  
250-743-5021)
- Newsletter Editor:  
Bill Dumont
- **Directors at Large:**  
Joe Hudak, Elaine Kitchen, Siggi Kemmler,  
Alan Campbell

## Convenors

- Sunshine: Mary Gale
- Tea: The Team
- Raffle: Hilda Gerrits
- Club Liaison:  
Alan Campbell
- Library: Joyce Rodger
- Program Co-ordinator:  
Alan Campbell,  
Sandra Stevenson
- History: Ian Efford
- Garden Tours: Alan Murray
- CV Garden Fair: The Team
- Facility Liaison: Roy Elvins
- Christmas Party: The Team
- Bus Tour: Bill Dumont
- Species Garden Reps: Siggi Kemmler,  
Alan Campbell



## Cowichan Valley Rhododendron Society

A Chapter of the American  
Rhododendron Society  
P.O. Box 904  
Duncan, British Columbia  
V9L 3Y3

<http://cowichan.rhodos.ca>



[www.cowichanvalleygardenfair.com](http://www.cowichanvalleygardenfair.com)

Saturday April 30, 2016; 10 am—2 pm

Newsletter design/format  
& website edits by  
Mary-Lynn Boxem  
([mboxem@shaw.ca](mailto:mboxem@shaw.ca))